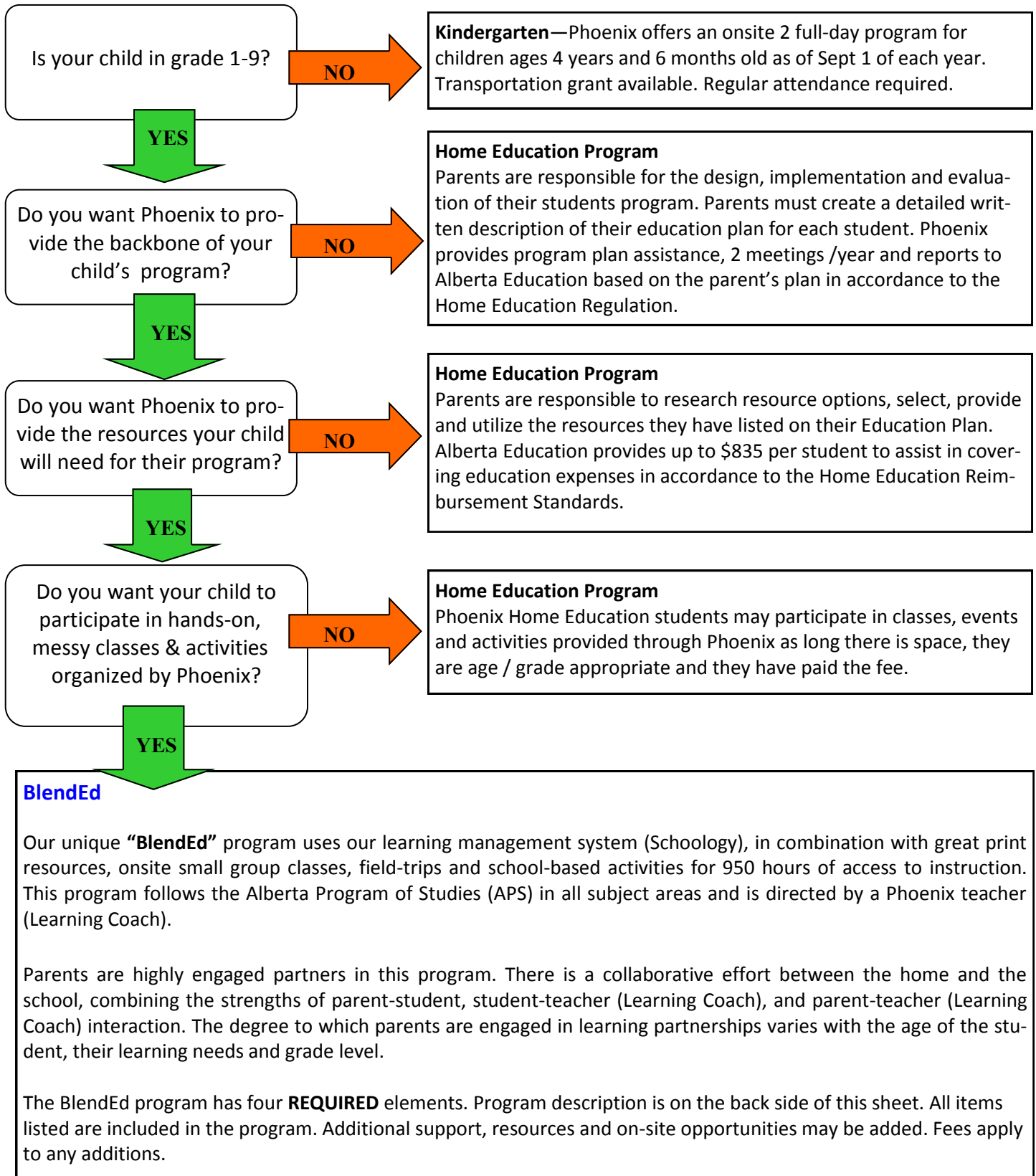


# Which Program is Best for Your Child?

The Phoenix Education Foundation provides two different home-based program options. The purpose of this guide is to assist you in picking the program that works best for your child and meets your expectations and needs.

*At this time Phoenix is unable to accept new special needs students in our BlendEd Program or new high school students.*



## Blend Ed—Grade 1-6

|   |   |
|---|---|
| <p><b>SUPPORT:</b></p> <ul style="list-style-type: none"> <li>▪ general orientation session and a program specific orientation</li> <li>▪ minimum of 3 meetings and 2 assessment consultations with a Learning Coach</li> <li>▪ 10 sessions (30 minutes each) of Private Student Instruction (PSI)</li> <li>▪ 2 parent workshops</li> </ul>   |   |
| <p><b>ONSITE OPPORTUNITIES:</b></p> <ul style="list-style-type: none"> <li>▪ 4 Core Blocks (2.5 hours for 5 weeks) of Creation Studio classes (LA/Social Studies, Science Math)</li> <li>▪ 1 Wellness Block</li> <li>▪ 1 Fine Arts Block</li> <li>▪ 2 Curriculum Camps</li> <li>▪ 3 Fieldtrips</li> <li>▪ Social Skills course</li> <li>▪ 8 Foundational workshops</li> <li>▪ SLA/PATs and prep classes for grades 3 and 6</li> <li>▪ 9 free celebrations over year</li> <li>▪ 2 Show and Share days</li> <li>▪ participation in year-end ceremony</li> </ul>                             | <p><b>ASSIGNMENTS AND ASSESSMENT:</b></p> <ul style="list-style-type: none"> <li>▪ teacher-created Learning Pathway for all subject areas</li> <li>▪ teacher designed assignments with teacher marking and feedback</li> <li>▪ diagnostic testing (CTBS)</li> <li>▪ 3 private reading assessments (F&amp;P)</li> <li>▪ access to exam bank</li> <li>▪ report cards</li> </ul> |
| <p><b>RESOURCES:</b></p> <ul style="list-style-type: none"> <li>▪ enrollment in Schoology courses, including a variety of digital resources</li> <li>▪ print resources for LA, Math, Science and Social</li> <li>▪ a Phoenix t-Shirt</li> <li>▪ day passes for 2 off-site field trips</li> <li>▪ access to RAZ kids</li> <li>▪ a free <a href="#">gmail</a> account with access to g-suite,</li> <li>▪ access to early literacy resources (gr. 1 &amp; 2 only)</li> <li>▪ literacy event at Chapter's</li> <li>▪ access to <a href="#">Chromebook</a> rental program (\$99/yr)</li> </ul> |   |

## Blend Ed—Grade 7-9

|  |   |
|--|---|
| <p><b>SUPPORT:</b></p> <ul style="list-style-type: none"> <li>▪ general orientation session and a program specific orientation</li> <li>▪ minimum of 3 meetings and 2 assessment consultations with a Learning Coach</li> <li>▪ 12 sessions (30 minutes each) of Private Student Instruction (PSI)</li> <li>▪ 2 parent workshops</li> </ul>  |   |
| <p><b>ONSITE OPPORTUNITIES:</b></p> <ul style="list-style-type: none"> <li>▪ 19 LA and Math Classes</li> <li>▪ 16 Science &amp; Social Labs</li> <li>▪ 5 Option (3 CTF and 2 other) Classes</li> <li>▪ 1 Health/Wellness Class</li> <li>▪ 1 Phys Ed Class</li> <li>▪ 2 Teen Specialty Events</li> <li>▪ 9 free celebrations over year</li> <li>▪ PATs and free prep classes for grade 9</li> <li>▪ participation in year-end ceremony</li> </ul> | <p><b>ASSIGNMENTS AND ASSESSMENT:</b></p> <ul style="list-style-type: none"> <li>▪ teacher-created Learning Pathway for all subject areas</li> <li>▪ teacher designed assignments with teacher marking and feedback</li> <li>▪ diagnostic testing (CTBS)</li> <li>▪ 3 private reading assessments (F&amp;P)</li> <li>▪ access to exam bank</li> <li>▪ report cards</li> </ul> |
| <p><b>RESOURCES:</b></p> <ul style="list-style-type: none"> <li>▪ enrollment in Schoology courses, including a variety of digital resources</li> <li>▪ a crate with core print for LA, Math, Science and Social</li> <li>▪ a free <a href="#">gmail</a> account with access to g-suite</li> <li>▪ literacy event at Chapter's</li> <li>▪ access to <a href="#">Chromebook</a> rental program (\$99/yr)</li> <li>▪ a Phoenix t-Shirt</li> </ul>   |   |

**Fees: Registration:** \$25.00 returning students, \$50.00 new **Textbook Rental:** \$75.00 annual refundable upon return